



DESCRIPTION

The ACS-ELV provides elevator control for the AC Series access control system. The kit consists of a master controller board, one AC-2DE expander board, one AC-IOE expander board, and one AC-C enclosure. It supports one cab and eight floors with the included equipment. AC-IOE expander boards can increase this capacity up to one elevator cab with 64 floors, or two elevator cabs with 32 floors each.

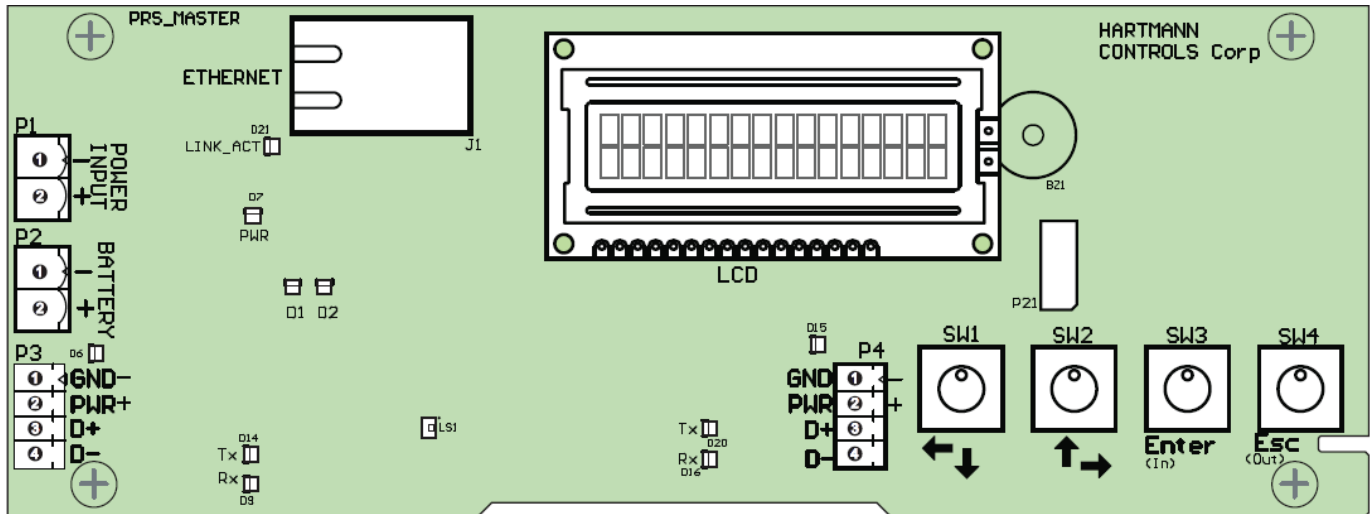
The AC-2DE is an expander board with capacity for two readers. The board supports two card reader inputs, six digital inputs, four solid state dry contact relays, and two integrated lock power outputs. One additional AC-2DE can be added for sites using a second elevator cab.

Each AC-IOE expander board adds support for eight more floors. Up to seven AC-IOEs can be added to the ACS-ELV, for a total of eight.

The AC-C enclosure holds the master controller, an AC-PS1250 power supply (not included), and up to four total expansion boards. Standoffs are included to mount the boards, and nine conduit knockouts on the sides and back of the enclosure. Up to two additional AC-C enclosures can be added per system.

FEATURES

- Two Wiegand inputs per AC-2DE
- Eight solid state dry contact relays per AC-IOE
- Eight solid state dry contact inputs per AC-IOE
- NDAA and TAA compliant
- Supports a single elevator cab with up to 64 floors
- Supports two elevator cabs with up to 32 floors each
- Supports up to seven AC-IOE expander boards
- Supports up to two AC-2DE expander boards



FEATURE CALL-OUT DEFINITIONS

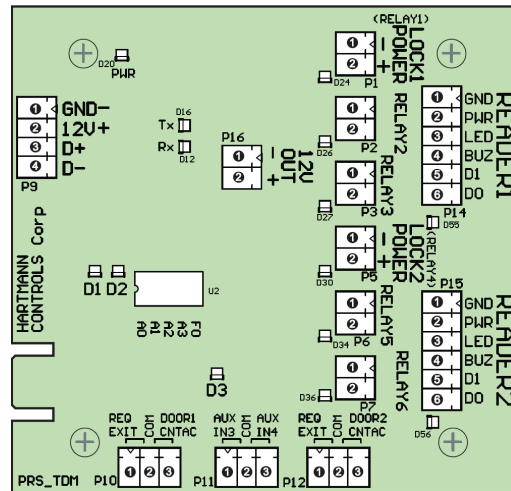
- [P1] DC 12V ~ 14V input
- [P2] DC 12V Backup battery
- [P3] Power and communication for the left strip
- [P4] Power and communication for the right strip
- [P21] Expansion
- [J1] Ethernet
- [LS1] Tamper sensor
- [BZ1] Embedded buzzer
- [LCD] LCD
- [P12] Input5, Common, Input6
- [P14] Reader1
- [P15] Reader2
- [P16] DC 12V out, max 500mA
- [SW1-4] Diagnostic navigation buttons

SPECIFICATIONS

- Power Source:** 12V DC (AC-PS1250)
- NIC:** RJ45 Ethernet Port 10/100Mbps
- Board Communication:** RS-485 (AC-STRIP)
- Protocols:** IPv4, IPv6, TCP, UDP, HTTPS
- Card Storage:** Up to 100,000 users.
- Event Storage:** Up to 50,000 events (first in, first out)
- UL Listing:** UL 294/ULC S319-05

AC-2DE

Two-Door Expansion Module



FEATURE CALL-OUT DEFINITIONS

- [P1] Door 1 lock power, 12V DC, 500mA
- [P2,P3] Door 1 dry contact relays
- [P5] Door 2 lock power, 12V DC, 500mA
- [P6,P7] Door 2 dry contact relays, dry*
- [P9] Power, communication data
- [P10-P12] Inputs
- [P14] Reader 1
- [P15] Reader 2
- [P16] 12V DC, 500mA

SPECIFICATIONS

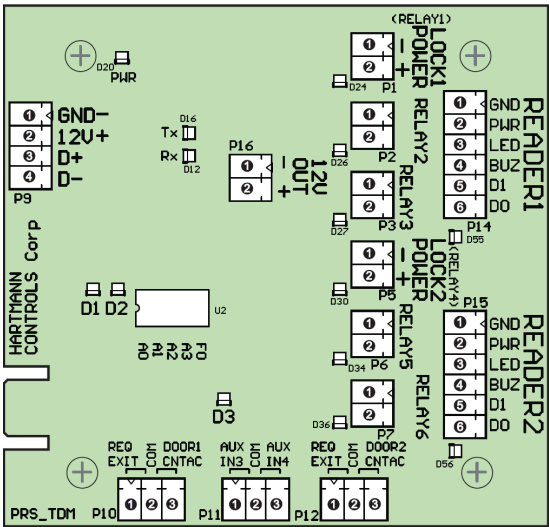
- Power Source:** 12V DC (drawn from main board)
- Lock Power:** 12V DC 500mA
- Option Power:** 12V DC 500mA
- Contact Rating:** 30V DC @1A
- Dimensions:** 3-1/2" H x 3-3/4" W

AC-IOE

8 Port IO Expander

AC-C

Steel,Vented, and Lockable Wall Enclosure



FEATURE CALL-OUT DEFINITIONS

- [P1-P4] Inputs
- [P9] Power, communication data
- [P10] 12V DC out, 200mA
- [P11-P18] Dry contact relays, 30V DC, 500mA

SPECIFICATIONS

- Power Source: 12V DC (drawn from main board)
- Contact Rating: 30V DC @ 500mA
- Dimensions: 3-9/16" H x 3-9/16" W

SPECIFICATIONS

- Material: Steel
- UL Listing: UL 294/ULC S319-05
- Dimensions:
 - Enclosure 19-3/8" H x 13-5/8" W x 3" D
 - Knockouts 1-1/8" and 2" diameter